

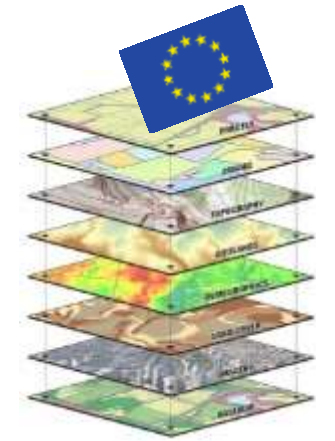


Creation of pan-European geospatial datasets – Challenges and Opportunities

Eurostat – E.4 – GISCO – H.I. Reuter

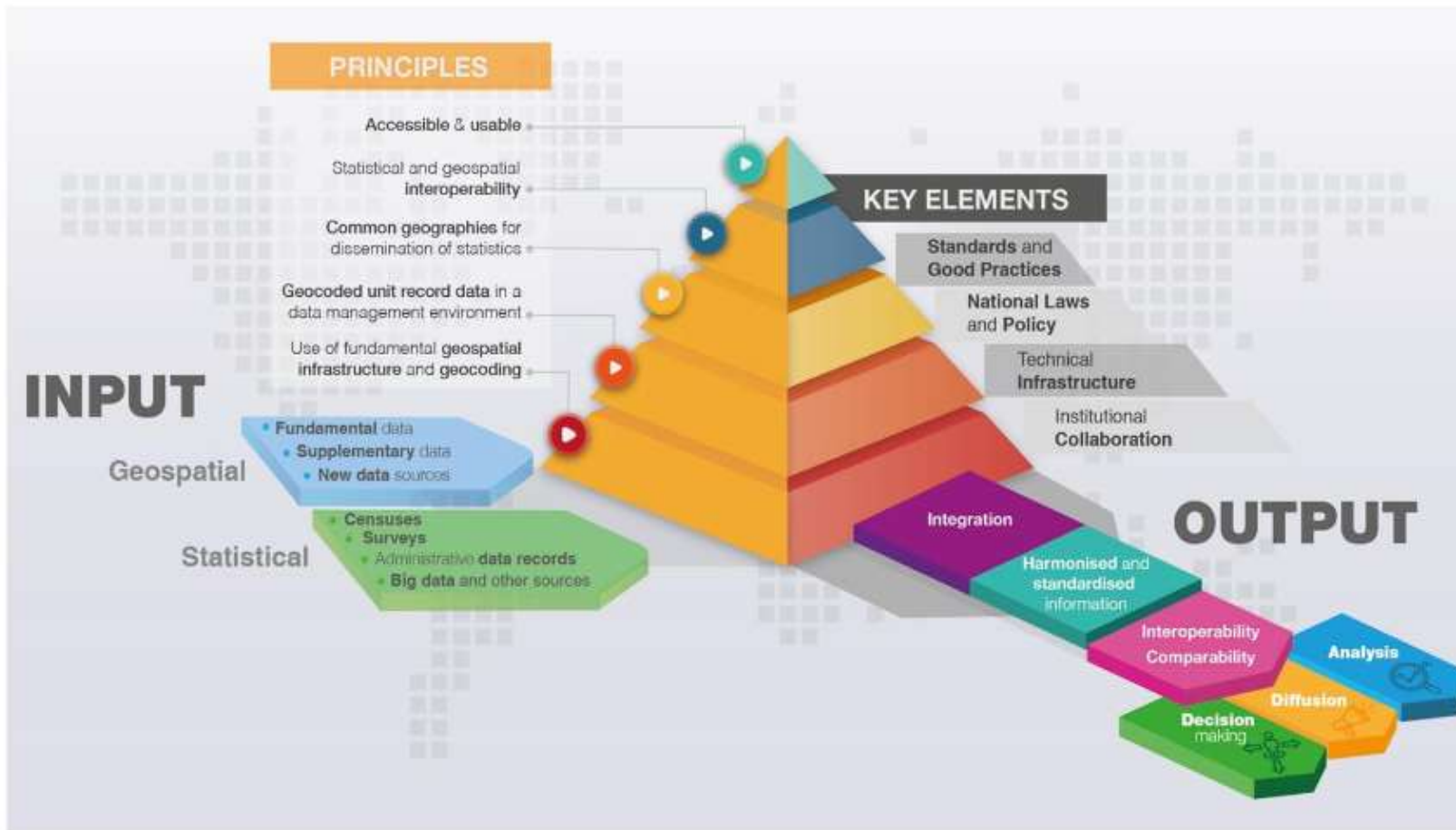


GISCO – The Geographical Information System of the Commission



- Permanent service of the European Commission (Eurostat)
- Role: Answers needs of European Commission, Eurostat and the ESS for geographical information at EU/national/regional levels.
 - Provision of GIS (reference) data, services and software,
 - Support cartographic and spatial analysis activities,
 - Coordinates commission-wide GI activities,
 - Stimulate the use of GIS to support commission activities,
 - Support activities on the integration of statistical and geospatial information.

Global Statistical Geospatial Framework

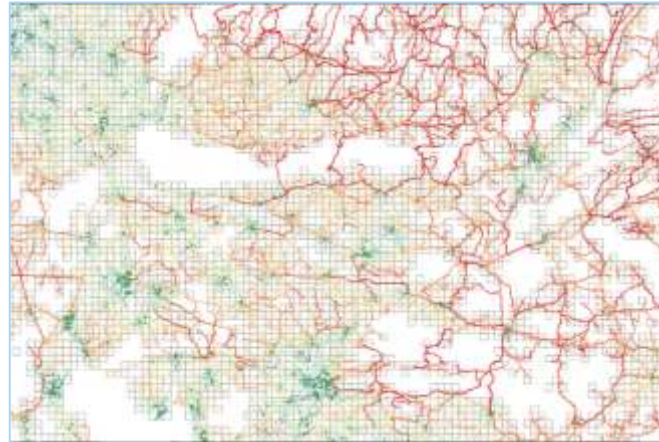


GISCO - the Geographic Information System of the Commission

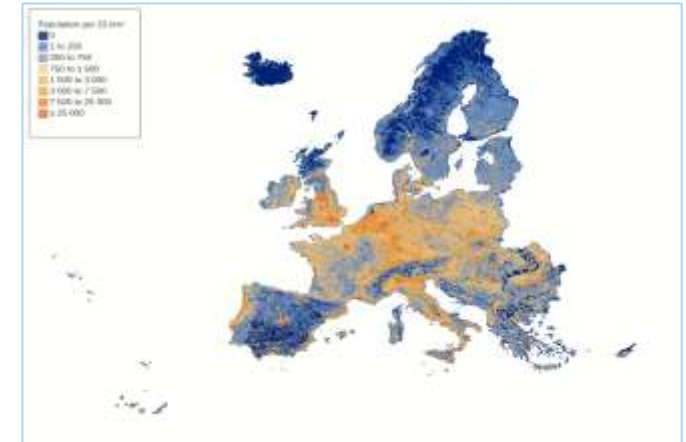
localise



analyse



visualise



Eurostats Workprogramm 2022

To bring Europe closer to citizens and regions, Eurostat will continue to make use of georeferenced data by systematically integrating and mainstreaming geospatial information into statistical production and **collecting more geospatial data, with a special focus on the core geospatial datasets** ⁽³⁾. This will allow for more detailed regional and local level statistics in areas such as demography, economy, environment, energy, transport and agriculture.

⁽³⁾ These are as defined by the Commission inter-service group on Geographic Information (COGI): administrative units, statistical units, buildings, cadastral parcels, addresses, transport networks, land parcel information system, postal codes, utility and governmental services.

Workflow for pan European GI Datasets

Computer Systems

INSPIRE Geoportal



data.europa.eu

Kohesio: discover EU projects

Human Intelligence

Local Contacts

Reports



NSI/NMCAs

Social media



Research projects



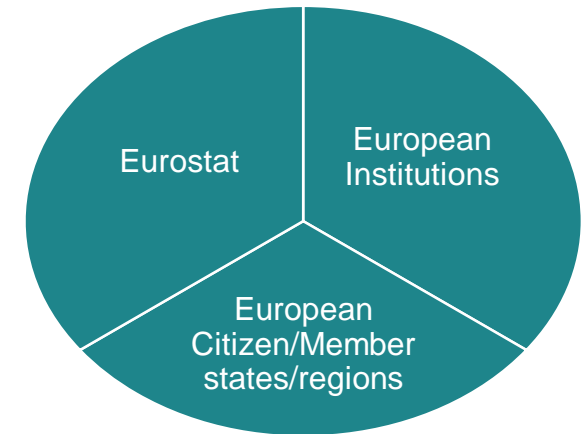
ETL

Analysis in Incoming WIKI
Import into Database
QAQC Cycles,
Integration, Generalisation,
Topological Checks,
Feedback with MS

.....

Majority of work

Analysis / Dissemination



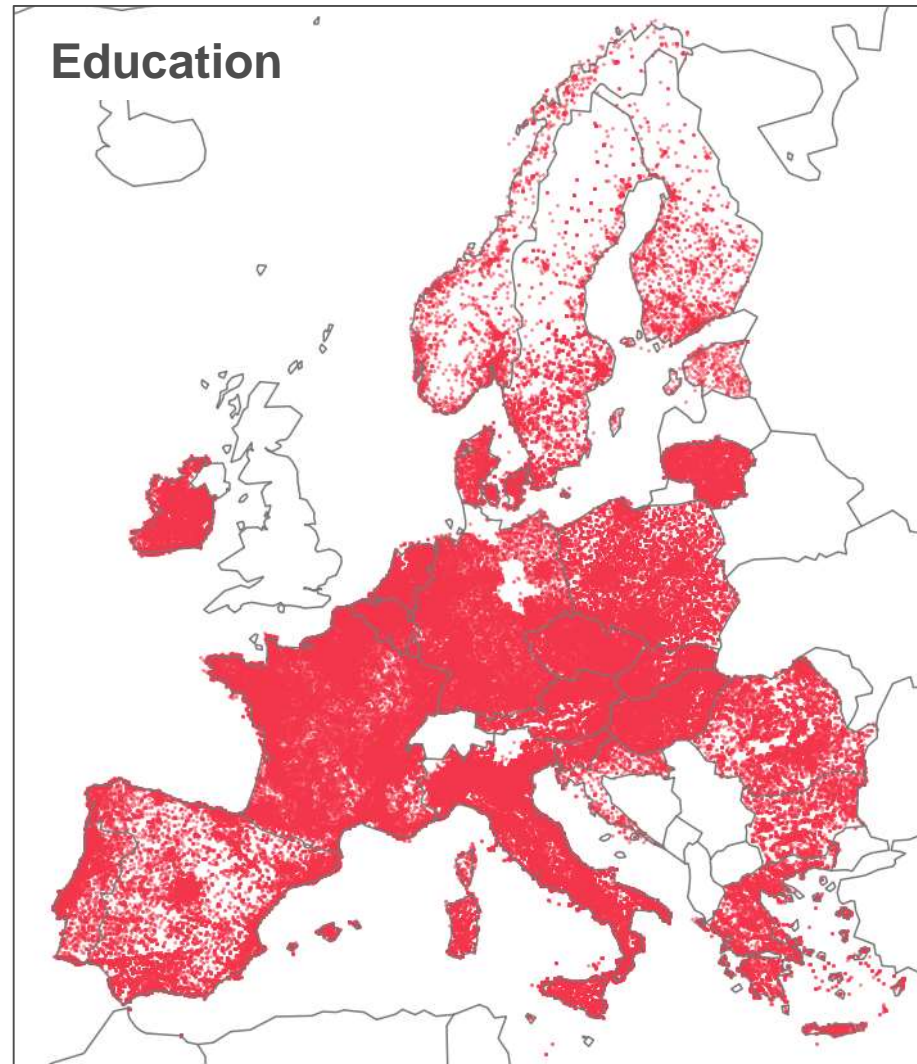
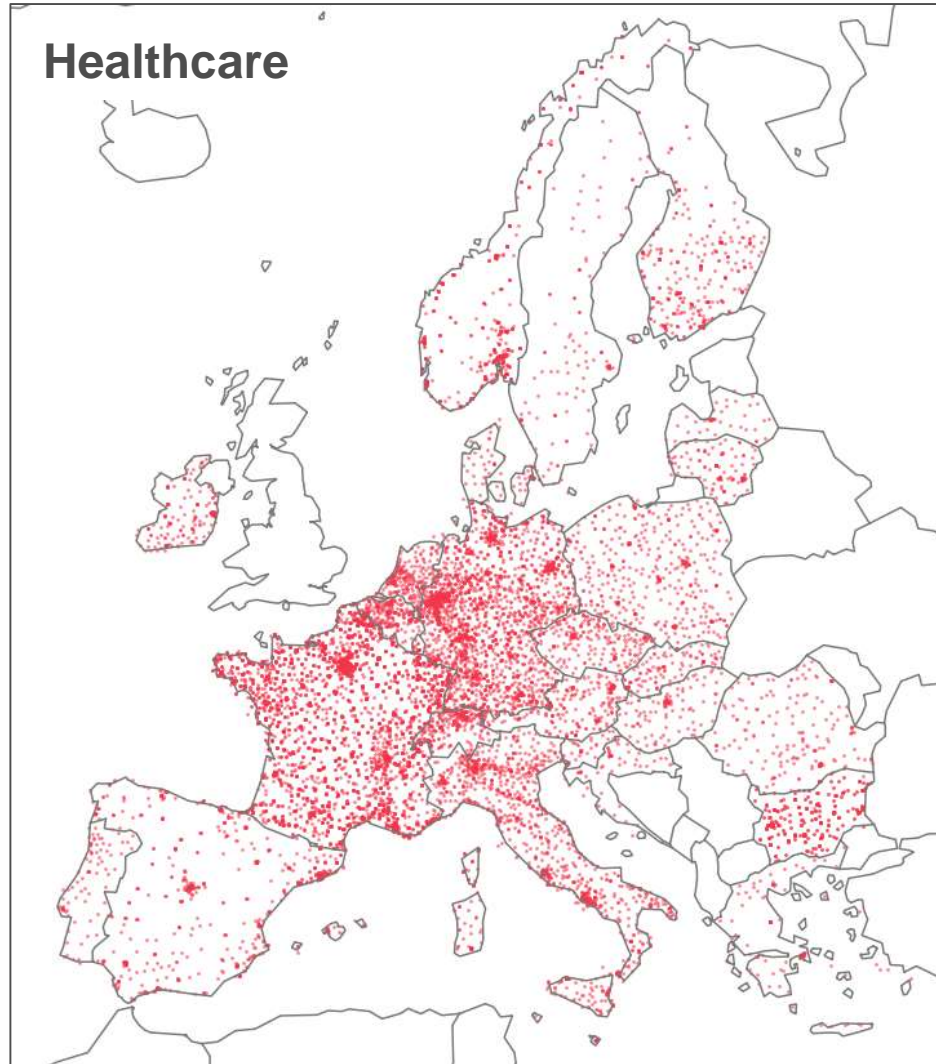
GISCO ReferenceDB

[Website](#) [Tercet](#)

Services: [Download](#),
[AddressAPI](#), [ID](#), [VectorT](#),
[OGC-API](#)



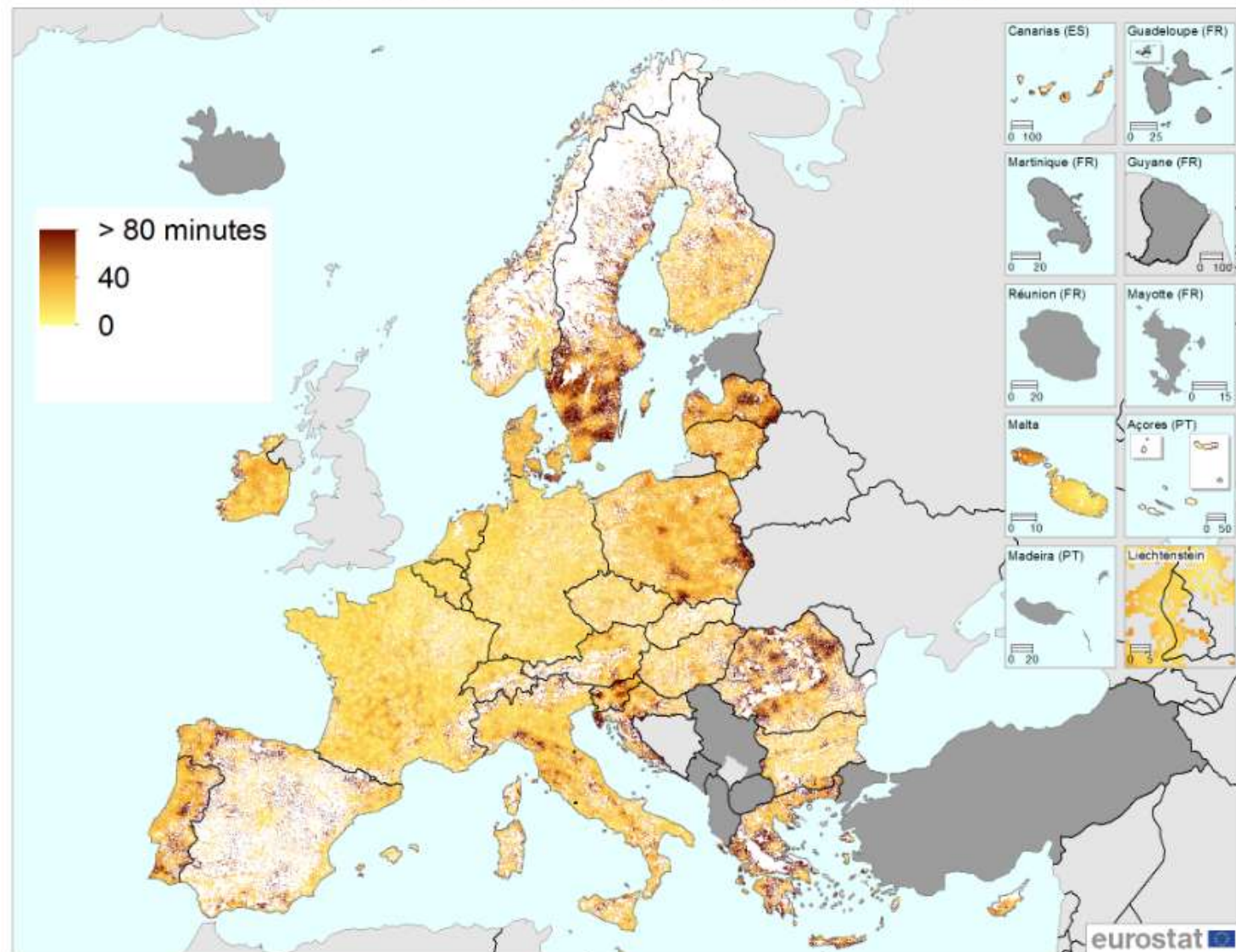
Data & systems: Utility services, examples



<https://ec.europa.eu/eurostat/web/gisco/geodata/reference-data/healthcare-services>

Geospatial analysis, aggregating into statistics

Access to Healthcare - Travel time (minutes) by 1km grid



0 150 300 450 600 km

Administrative boundaries: © EuroGeographics © UN-FAO © Turkstat
Cartography: Eurostat — GISCO, 10/2021

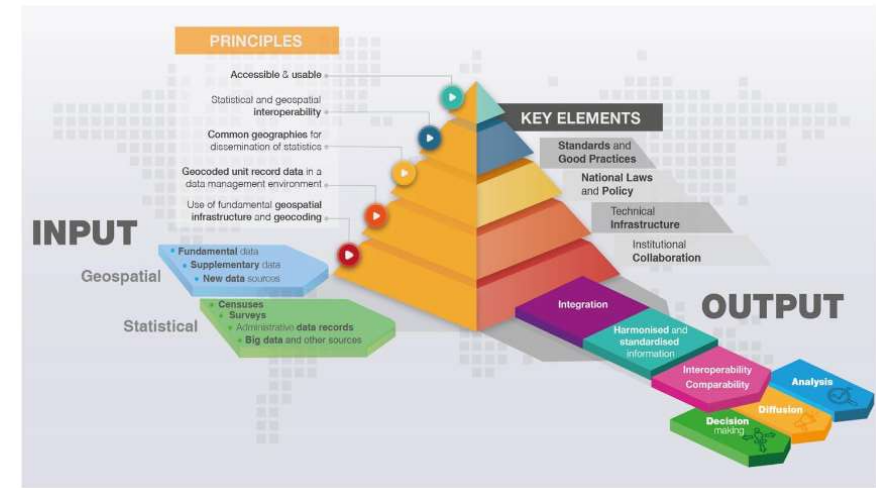
Buildings

- +116 Million individual building footprints
- ~39 GB DB/GPKG
- In internal review
- Discussion with Data Providers next
- Unique ID based on MS Information



Challenges / Opportunities

- Pan European progress is hampered by e.g.
 - a) available datasets, b) stability of services, c) performance of services or
 - d) at point of use restrictions due to financial demands.
- **Opportunities: More timely and more granular data (unit-record-based)**
- Code of conduct for Geospatial Data is required (e.g. PIDs, topology across domain, time-series) and enforced....
- API and Bulk Downloads are needed and support various user communities –
- We (the GIS community) need to move from spatial/special into the main stream usage...



Thank you

Contact: estat-gisco@ec.europa.eu



© European Union 2022

Unless otherwise noted the reuse of this presentation is authorised under the [CC BY 4.0](https://creativecommons.org/licenses/by/4.0/) license. For any use or reproduction of elements that are not owned by the EU, permission may need to be sought directly from the respective right holders.

